

habitus

LIVING IN DESIGN

ISSUE 03 APRIL - JUNE 2009



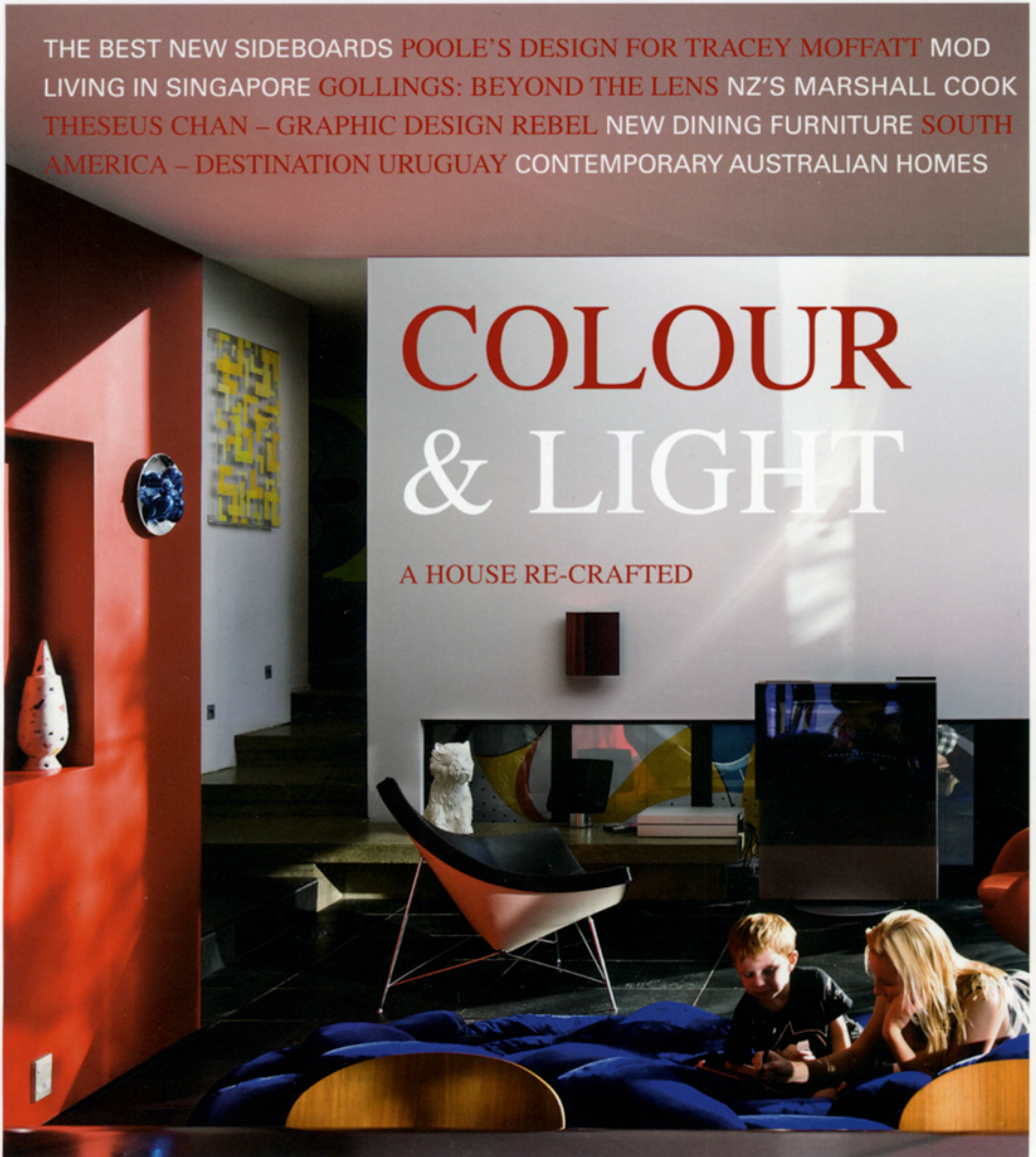
AUD \$12.95
NZ \$16.00
USD \$15.00

CDN \$16.50
EUR 8.50
SGD \$10.95

THE BEST NEW SIDEBOARDS POOLE'S DESIGN FOR TRACEY MOFFATT MOD
LIVING IN SINGAPORE GOLLINGS: BEYOND THE LENS NZ'S MARSHALL COOK
THESEUS CHAN - GRAPHIC DESIGN REBEL NEW DINING FURNITURE SOUTH
AMERICA - DESTINATION URUGUAY CONTEMPORARY AUSTRALIAN HOMES

COLOUR & LIGHT

A HOUSE RE-CRAFTED



scenario

maroubra apartments — NSW, australia

NOT AN ICON

“We wanted to respond to the headland, but not make it iconic,” says *William Smart* of his distinctive new apartment building overlooking the ocean at Sydney’s Maroubra Beach.

Paul McGillick explores Smart’s approach.

There are many things that astonish me about Australia, but if I were to choose just one stand-out it would be how we manage to build such appalling man-made environments on the edge of some of the most sublime coastline in the world.

Maroubra is just one of many superb beaches surrounding Sydney, every one of them embraced by the headlands thrust up millions of years ago by tectonic upheavals. Stand on the Maroubra headland and you are overwhelmed by the magnificence of the coastline and the peerless dome of the Pacific Ocean.

But turn around and look back and you are assaulted by an urban wasteland of cheap, badly built and architecturally bankrupt low-rise, post-War apartment

SMART DESIGN STUDIO

I 01

Northern Aspect

The dramatic curved profile echoes the cliff and the streetscape.

I 02

Inside / Outside

Transparency makes being in the living room like being in the ocean itself.

buildings. It was here, on a splendid triangulated site right on the headland that William Smart was asked to renovate an existing apartment block. In the event, it would have been too high, blocking out the neighbours’ views. So, the scheme was reconceived, allowing for demolition of the existing building and a lower underground carpark in a new building, thus conforming to the scale of the neighbourhood, protecting views and avoiding over-shadowing.

“It is a hard suburb to draw inspiration from,” says Smart, “but we tried to make a contribution to the area.” The ‘we’ included designer Brenon Liston, who acted as an artistic advisor/collaborator to help develop the sculptural form of the building and its ground plane.

And this raises another issue – the lack of imagination in Sydney’s multi-residential architecture. It is a litany of orthogonal glass and steel structures, with barely a hint of formal daring. But with Smart’s building we have a wonderfully bold, curvaceous form. It was, he says, “an opportunity to create a building which was a little more three-dimensional.”

And so it is as it responds to the curves of the beach below and the headland, as well as to the road – but without imposing itself on its neighbours. This must have been temptation, given the mediocrity of the urban context. But Smart resisted this, designing a building which is a ‘good neighbour’, adding to its context without any displays of egomania.



I 01



I 02

maroubra apartments — NSW, australia

SMART DESIGN STUDIO



“It’s a hard suburb to draw inspiration from, but we tried to make a *contribution to* the area. It was an opportunity to create a building which was a little more *three-dimensional.*”

—
SMART

There are four units in the building, each occupying an entire floor. It consists of three basic elements. The first is a rectilinear block at the back which connects visually with the neighbouring buildings and includes the bedrooms and bathrooms. Then there is the ground plane with its curving wall to the street and its series of serrated concrete block blades. Finally, there is the curved, lightweight glass and steel façade, dressed with a fixed louvred aluminium screen which provides protection from the sun and privacy from the street without diminishing views.

The combination of the three elements makes for a dynamic building which constantly changes character as one moves around it.

Inside, the planning is adroit. The bedrooms in the rear block are separated from the open-plan living/dining areas by a central corridor and accessed down the middle by the entry vestibule leading off from the lift core. This creates a reassuring separation between the two areas of the dwelling, minimising any sense of claustrophobia from living in an

I 03

I 03

Kitchen

The top-level penthouse responds to the building’s curved profile.

I 04

Southern Aspect

The building addresses the sweeping curve of the road.

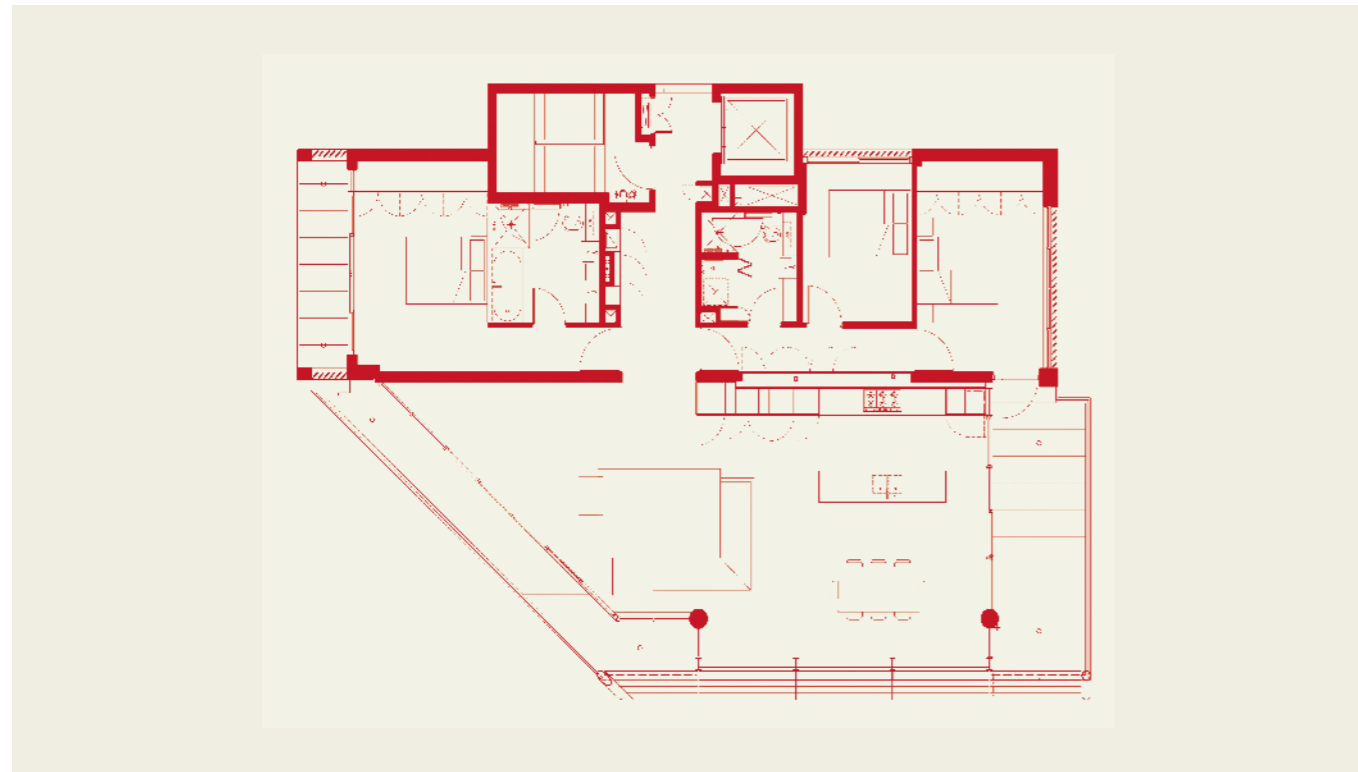
I 05 Following

Living Space

External louvres control the levels of direct sunlight.







I 06



I 07

I 06

Plan

I 07

Top floor apartment

Enjoys a nautical feel with its curved ceiling and façade.

I 08

Street Frontage

The building breathes new life into its more conservative environment.



I 08

apartment – and optimising the sense of light and space which comes from the unbelievable views on offer in the living/dining areas.

The top floor apartment has its own uniqueness with its curved façade and a certain nautical feel – due to the expansive view, the curved ceiling and to the fact that one does not see the road. Instead, one feels a part of the sublime vista of the ocean.

It is a distinctively Modernist building, but somehow retains the mood of beach life and culture. And like that culture, it is very much a part of its environment with a pronounced sustainable sensibility – passive solar design using orientation and louvres, natural cross-ventilation, energy efficient fittings and a careful consideration of materials.

ARCHITECT

Smart Design Studio

DESIGN TEAM

William Smart, Cameron Donald, Zig Peshos, Troy Melville, Tatsu Hayashi, Derek Chin, Kylie Tse

BUILDER

J and CG Constructions

MECHANICAL/ELECTRICAL/HYDRAULICS, LIGHTING

Donnelly Simpson Cleary DSC

STRUCTURAL

JJ Marino

LANDSCAPE

Aspect

QUANTITY SURVEYOR

BMT & Associates

BCA

Anthony Protas Consulting

PLANNER

SPD Town Planners

ACOUSTIC

Acoustic Logic

Smart Design Studio

(61 2) 8332 4333

smartdesignstudio.com

FURNITURE

Lounge Poltrona Frau

Quadra from Space Furniture, spacefurniture.com.au

Side chairs Poltrona Frau Astor X from Space.

Armchairs Poltrona Frau Regina from Space.

Coffee table Acerbis Lit from Space.

Dining table Poltrona Frau Laurana from Space.

Dining chairs Poltrona Frau Liz B from Space.

FINISHES

Walls Taubmans paint, taubmans.com.au

Floor honed stone tile and Feltex Hemisphere Cairo, feltex.com.au

Benchtops polished Caesarstone in Ice Snow, caesarstone.com.au

Splashbacks white colourback glass.

Bathroom and laundry walls white glazed ceramic tile.

Joinery polyurethane.

Balcony floor natural vitrified tile.

Rug client's own.

LIGHTING

Downlights Audrey circular from Boaz Australia, (61) 413 809 098.

Feature light Artemide Fortuni

from Poliform, poliform.com.au

FIXTURES/EQUIPMENT

Basin Rogerseller Duravit, rogerseller.com.au

Taps and mixers Accent Geo Viva, accentinternational.com.au

WC Fowler Newport, fowler.com.au

Bath Rogerseller Classic in steel.

Toilet roll holder Madinoz, madinoz.com.au

Towel ring Vola, vola.com/dedece.com

Rangehood Osair telescopic, qasair.com.au

Cooktop, dishwasher and oven Smeg, smeg.com.au

Fridge Fisher & Paykel, fisherpaykel.com.au

Kitchen sink Franke undermount, franke.com.au

Kitchen mixer Caroma Liano, caroma.com.au

Water chiller Zip Chilltap, zipindustries.com.au

Hot water Rinnai Infinity Instantaneous, rinnai.com.au

Laundry taps and spout Caroma Leda. Laundry tub Clark, clark.com.au

Washing machine stop cocks Dorf Mini, dorf.com.au

Home automation Clipsal C-Bus, clipsal.com.au